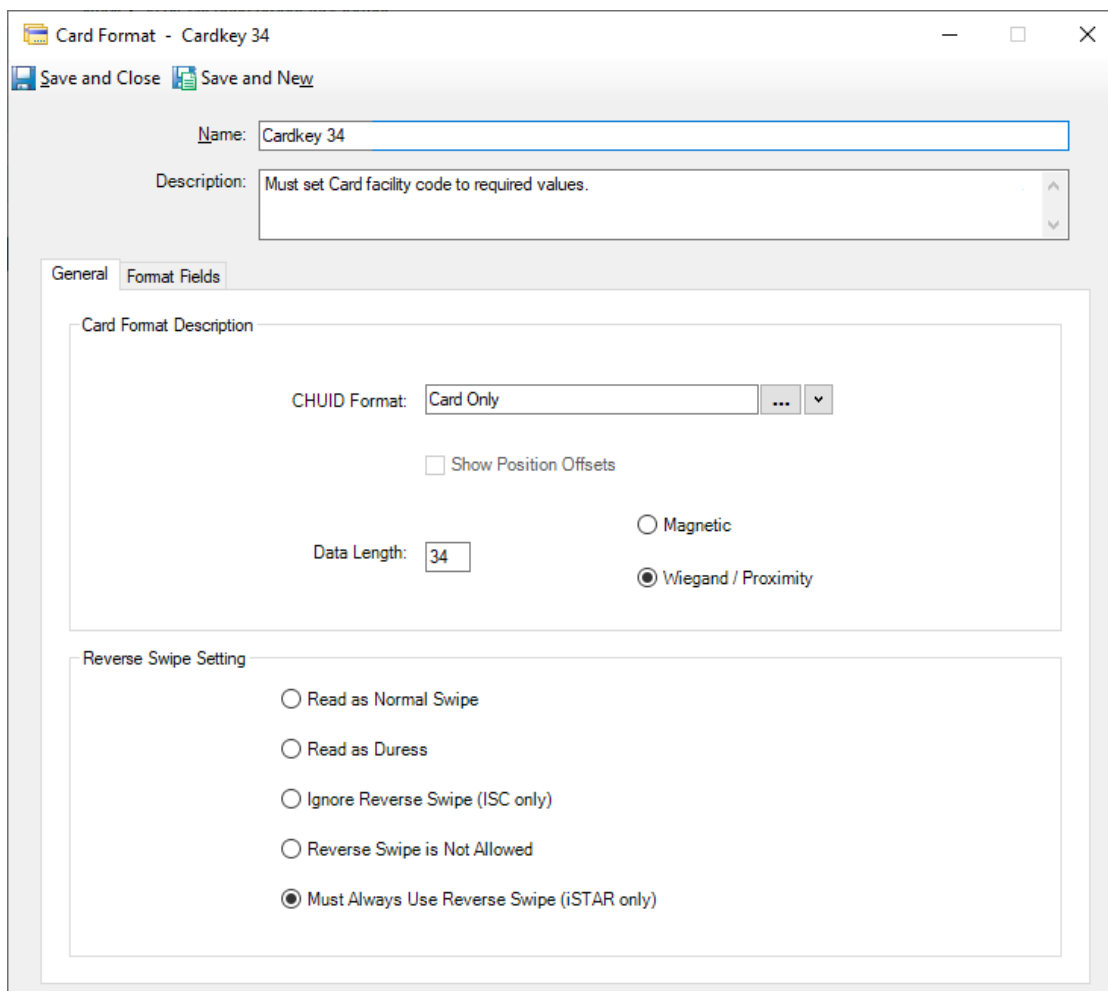


How to Define The Johnson Controls 34-bit Cardkey Format

Article ID: SWH-KB-nID-000034479

Published: Mar-29-2022

The Johnson Controls 34-bit Cardkey format, which in P2000 is referred to as Standard Wiegand, uses a reverse bit order compared to most other card formats. Select the **Must Always Use Reverse Swipe (iSTAR only)** radio button to reverse the bit stream.



Card Format - Cardkey 34

Save and Close Save and New

Name: Cardkey 34

Description: Must set Card facility code to required values.

General Format Fields

Card Format Description

CHUID Format: Card Only

Show Position Offsets

Data Length: 34

Magnetic

Wiegand / Proximity

Reverse Swipe Setting

Read as Normal Swipe

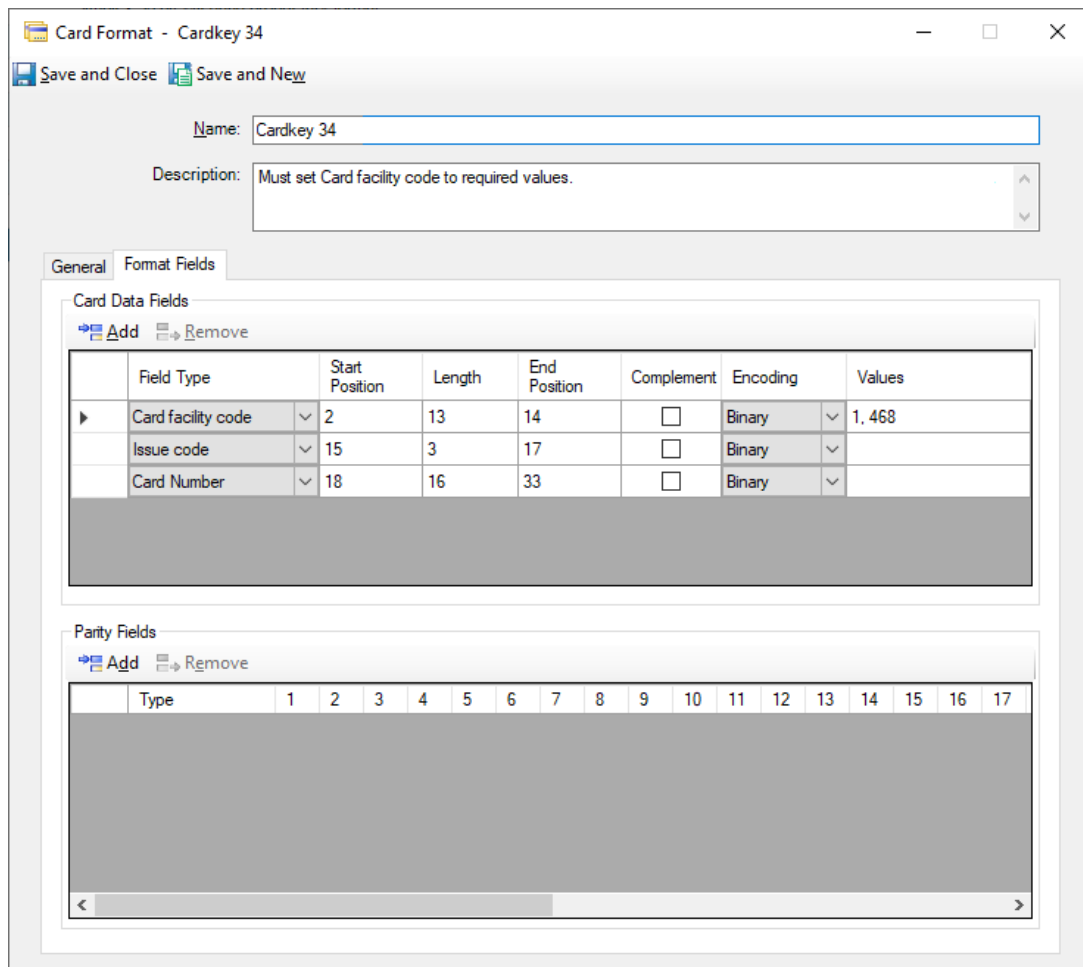
Read as Duress

Ignore Reverse Swipe (ISC only)

Reverse Swipe is Not Allowed

Must Always Use Reverse Swipe (iSTAR only)

On the **Format Fields** tab, select the values as shown in the screen shot. The values 1, 468 in the **Values** column of the **Card facility code** row are sample entries. Please enter the actual facility code(s) used at the reader.



f

If you have any questions regarding this **Knowledge** article, please contact Technical Support.

North America & Latin America:

Toll Free: 1-800-507-6268 (option 3, 1) or 1-800-392-2873 (option 3, 1)

Hours: 8 AM – 8 PM Eastern

Access Technical Support: Access-support@jci.com

License Inquiries: ccurelicense@tycoint.com

EMEA:

Toll Free: 800-2255 8926

Direct: +31 475 352 722

Hours: 8 am to 6 pm CET

Access Technical Support: Access-support@jci.com

License Inquiries: sp-licensing-support@jci.com

Asia/Pacific:

Toll free: +800-2255 8926

Direct: +91-80-4199-0994

Hours: 9am to 6pm CST (China Time) and 9am to 7pm IST (India Time)

Access Technical Support: Access-support@jci.com

License Inquiries: sp-licensing-support@jci.com

[Complete Support Contact List](#)

Information furnished by Johnson Controls is believed to be accurate and reliable. However, no responsibility is assumed by Johnson Controls for its use, nor any infringements of other rights of third parties which may result from its use. No license is granted by implications or otherwise under any patent rights of Johnson Controls.

© 2022 Johnson Controls. All Rights Reserved.

Johnson Controls and the product names listed above are marks and/or registered marks. Unauthorized use is strictly prohibited. Product offerings and specifications are subject to change without notice. Actual products may vary from photos. Not all products include all features. Availability varies by region; contact your sales representative.