

## Genetec Security Center Integration for P2000

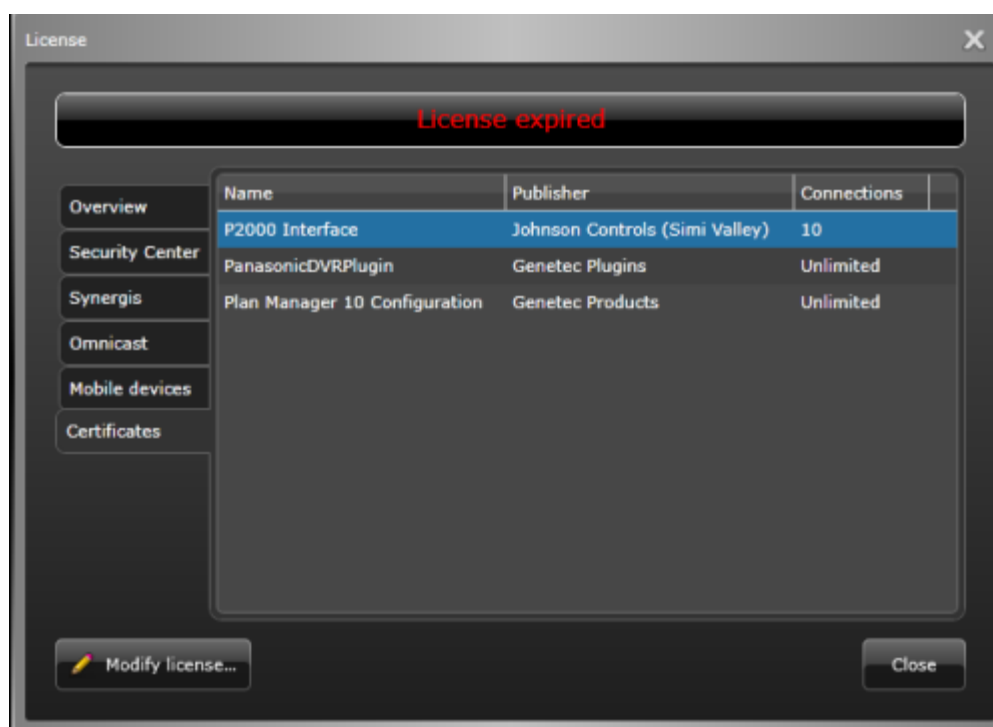
Article ID: SWH-KB-nID- 000036009

Published: Jan-27-2023

For the P2000-GSC integration application to be used with the Genetec Security Center system, you must order the P2K-DV-GSC314 license option for P2000.

A license must be obtained from Genetec. The specific part number is: GSC1SDK-JCI-P2000Interface This license is required to be part of the Genetec Security Center license for the integration to work.

**PLEASE NOTE:** There are two P2000 licenses offered by Genetec, and you must get the right one (GSC-1SDK-JCI-P2000Interface) or the integration will not function. The correct Genetec license option should have "Johnson Controls (Simi Valley)" listed as the publisher. Here are two screenshots, the first one shows the correct license installed on a GSC server:



The name is “P2000 Interface”, and the publisher is “Johnson Controls (Simi Valley)”.

The second screenshot shows the license that is not for the P2000 GSC Interface Service:



If you have any questions regarding this **Knowledge** article, please contact Technical Support.

**North America & Latin America:**

Toll Free: 1-800-507-6268 (option 3, 1) or 1-800-392-2873 (option 3, 1)

Hours: 8 AM – 8 PM Eastern

Access Technical Support: [Access-support@jci.com](mailto:Access-support@jci.com)

License Inquiries: [ccurelicense@tycoint.com](mailto:ccurelicense@tycoint.com)

**EMEA:**

Toll Free: 800-2255 8926

Direct: +31 475 352 722

Hours: 8 am to 6 pm CET

Access Technical Support: [Access-support@jci.com](mailto:Access-support@jci.com)

License Inquiries: [sp-licensing-support@jci.com](mailto:sp-licensing-support@jci.com)

**Asia/Pacific:**

Toll free: +800-2255 8926

Direct: +91-80-4199-0994

Hours: 9am to 6pm CST (China Time) and 9am to 7pm IST (India Time)

Access Technical Support: [Access-support@jci.com](mailto:Access-support@jci.com)

License Inquiries: [sp-licensing-support@jci.com](mailto:sp-licensing-support@jci.com)

[Complete Support Contact List](#)

---

Information furnished by Johnson Controls is believed to be accurate and reliable. However, no responsibility is assumed by Johnson Controls for its use, nor any infringements of other rights of third parties which may result from its use. No license is granted by implications or otherwise under any patent rights of Johnson Controls.

© 2022 Johnson Controls. All Rights Reserved.

Johnson Controls and the product names listed above are marks and/or registered marks. Unauthorized use is strictly prohibited. Product offerings and specifications are subject to change without notice. Actual products may vary from photos. Not all products include all features. Availability varies by region; contact your sales representative.